


AbuByte POS - System Requirements

Production-Ready Windows Desktop POS System

PAGE 1: HARDWARE & SOFTWARE REQUIREMENTS






◆ Complete System Requirements Overview



System Requirements

Complete Hardware, OS, and Software Specifications

1 Hardware Compatibility Matrix

COMPONENT	MINIMUM	RECOMMENDED	NOTES
 Processor	Dual-core 2.0 GHz	Quad-core 2.5 GHz	x64 (64-bit) architecture
 Memory (RAM)	4 GB	8 GB	More RAM = better performance
 Storage	500 MB free	2 GB free	Grows with business data
 Graphics	-----	Integrated	No dedicated GPU required
 Display	10-inch, 1024x768	13-inch+, 1920x1080	Touch support optional

2 Operating System Requirements

Windows Desktop

Minimum: Windows 10 (64-bit)

Recommended: Windows 10/11 (64-bit)

Architecture: x64 (64-bit) only

Build: Windows 10 build 15063 or later

Additional Platforms (Ready for Deployment)

Android

Android 5.0 (API 21) or higher

iOS

iOS 12.0 or higher

macOS

macOS 10.14 or higher

Linux

Flutter-supported (not extensively tested)

3 Software Dependencies

End User Requirements

- ✓ No additional software needed - completely self-contained
- ✓ Flutter runtime bundled with application
- ✓ All dependencies included in installer package
- ✗ No .NET Framework required (Flutter-based)
- ✗ No Java required
- ✗ No Python required

Runtime Libraries

- ✓ Visual C++: Usually auto-installed with Windows
- ✓ No special drivers required for core functionality
- ✓ Standard Windows printer drivers (already installed on most systems)

This consolidated view presents all system requirements in one professional dashboard:

- Hardware Compatibility Matrix - Clear minimum/recommended specifications
- Operating System Requirements - Windows desktop plus additional platform readiness
- Software Dependencies - Zero external requirements with self-contained architecture

- ✓ Single reference point for deployment planning
- ✓ Professional enterprise documentation standards
- ✓ Comprehensive requirements at a glance
- ✓ Optimized for IT team review and approval

♦ Enterprise Installation Process

For Technical Teams:

- Single executable: AbuBytePOS-Setup.exe
- Standard NSIS installer with custom branding
- Installs to: Program Files\AbuBytePOS

- Creates: Start Menu shortcuts + optional Desktop icon
- Registers: Windows Add/Remove Programs entry
- Includes: Complete uninstaller

For Business Users:

1. Download installer
2. Double-click to begin
3. Follow familiar Windows prompts
4. Launch from Start Menu
5. Login and begin operations

First-Time Business Setup:

1. Initial login with admin credentials (created via included script)
2. One-time data synchronization
3. Configure store settings (name, tax, currency)
4. Load product catalog
5. Train cashiers
6. Go live!

- ✓ Time to Productive: Under 30 minutes from download to operations
- ✓ Technical Requirements: Standard Windows PC, no special expertise
- ✓ Support Included: 30-day installation and configuration assistance

PAGE 2: NETWORK & PERIPHERAL SUPPORT

- ♦ Enterprise Network & Peripheral Infrastructure

BUSINESS CONTINUITY GUARANTEE:

- Offline-First Architecture: Uninterrupted operations during outages

- 7+ Day Offline Capability: Extended business continuity
- Automatic Sync: Seamless data synchronization when online

ENTERPRISE SECURITY STANDARDS:

- TLS 1.3 Encryption: Bank-level data protection
- Single Port Architecture: Simplified firewall configuration
- Compliance Ready: GDPR, CCPA aligned security protocols

SCALABLE BUSINESS INFRASTRUCTURE:

- Multi-Site Deployment: Branch office & franchise ready
- Corporate Hardware Compatible: Standard peripherals supported
- Enterprise Integration Framework: API-ready for custom requirements

- ✓ Designed for Business-Critical Operations
 - ✓ Built on Enterprise-Grade Cloud Infrastructure
 - ✓ Ready for Corporate Deployment Standards
-

♦ Peripheral Support

Barcode Scanners - ✓ FULLY SUPPORTED

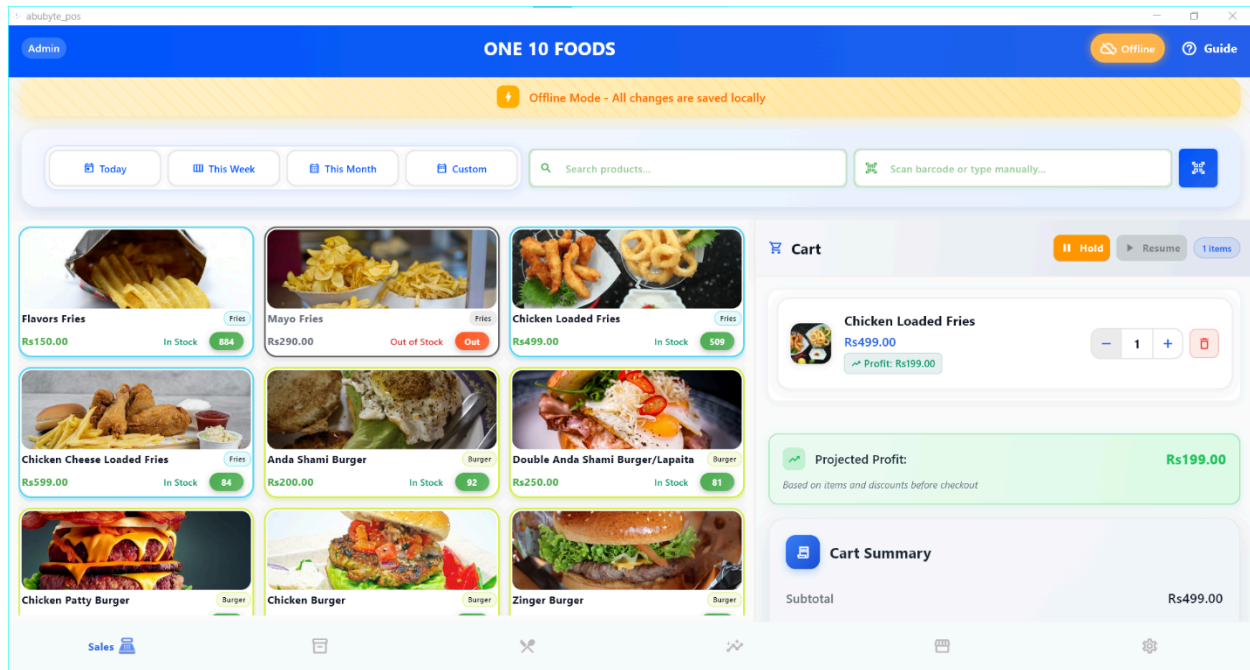
Supported Types:

- **USB Keyboard Wedge Scanners** (most common)
- **HID-Compatible Scanners** (plug and play)
- **Camera-Based Scanning** (mobile devices only)

How It Works:

- Scanners emulate keyboard input
- App detects rapid keystroke sequences
- Automatically searches and adds products to cart

- No drivers or configuration required



"Enterprise Retail Operations: AbuByte POS handles barcode scanning, offline operations, and multi-product management simultaneously - exactly as used by ONE10 FOODS in production environment."

♦ Enterprise Printing & Hardware Integration

✓ DUAL INVOICE SYSTEM:

- Standard A4 PDF: Professional business invoices (archival quality)
- Thermal 58mm PDF: Receipt-optimized for customer copies

✓ STANDARD A4 INVOICE FEATURES:

- Professional business formatting
- Complete transaction details
- Store branding and logo
- Multi-page support for large orders
- Saved to Documents folder for easy access

THERMAL RECEIPT FEATURES:

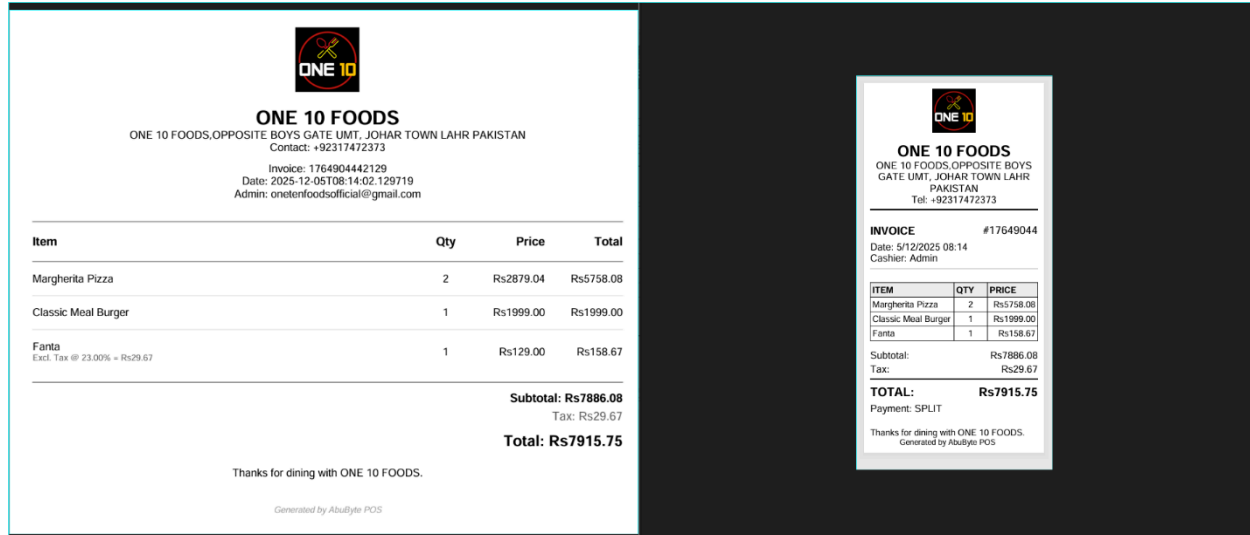
- Optimized for 58mm thermal paper
- Compact, retail-appropriate format
- Automatic filename: "THERMAL_RECEIPT_XXX.pdf"
- Built-in printing instructions
- Windows printer dialog integration

SUPPORTED PRINTING METHODS:

- Windows Native Print Dialog
- Any Windows-compatible printer
- Network and USB printers
- Standard printer drivers
- PDF export for manual printing

ENTERPRISE BENEFITS:

- Dual-format flexibility (business + customer copies)
- Professional branding on all outputs
- Cross-platform compatibility
- No special drivers required



✓ Dual-Format Flexibility | ✓ Professional Branding | ✓ Business & Customer Ready

"Enterprise Invoice Generation: AbuByte POS delivers dual-format professional output - archival A4 business invoices and thermal-optimized customer receipts from the same transaction data."

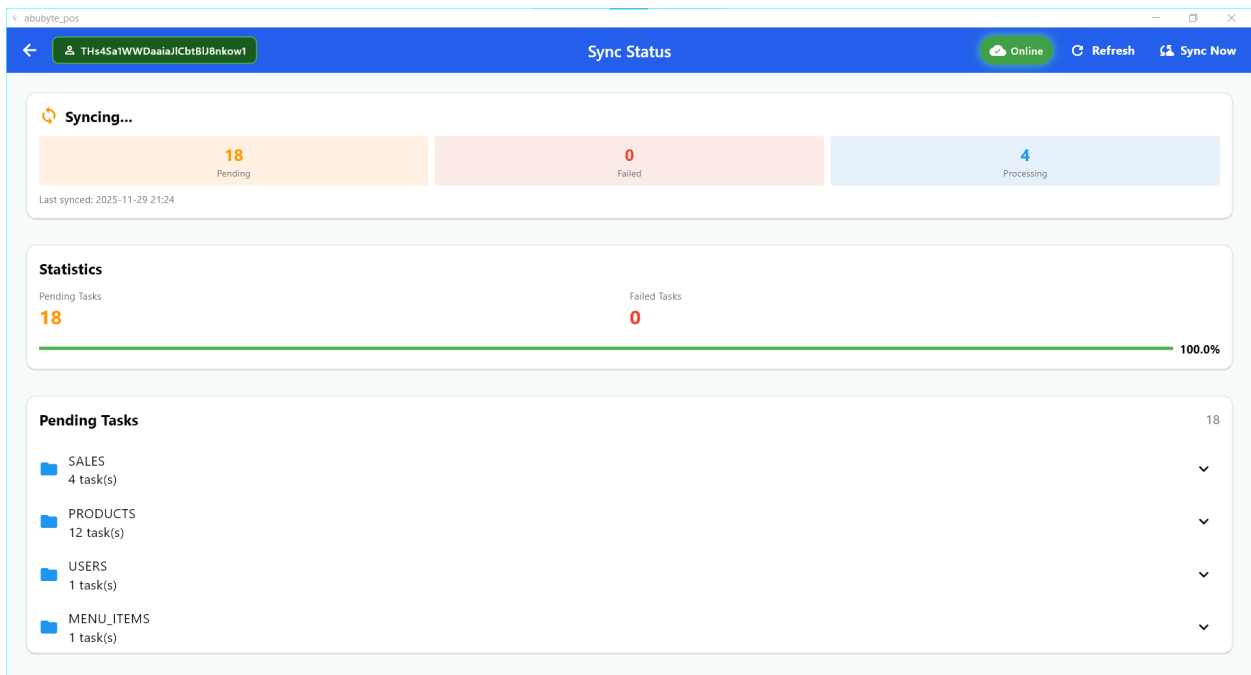
PERIPHERAL	STATUS	NOTES
Barcode Scanner	✓ FULL SUPPORT	USB keyboard wedge, HID-compatible, no drivers required. Works with all standard barcode scanners that emulate keyboard input.
Standard Printers	✓ FULL SUPPORT	Windows-compatible printers via network or USB connection. Uses standard Windows printer drivers. Supports all common printer types (inkjet, laser, dot matrix).
Thermal Printers	⚠ VIA PDF OPTIMIZED	58mm thermal paper optimized PDF generation. PDF files are automatically opened in default viewer for manual printing. Optimized layout for thermal receipt printers.
Cash Drawers	✗ NOT SUPPORTED	Manual operation only. Cash drawer must be opened manually by staff. No automatic integration with receipt printers or payment systems.
Payment Terminals	✗ NOT SUPPORTED	Manual payment entry required. Staff must manually enter payment amounts and methods. No direct integration with card readers or payment processing terminals.
Customer Displays	✗ NOT SUPPORTED	On-screen display only. Transaction details are shown on the main POS screen. No external customer-facing display integration available.
USB Keyboards/Mice	✓ FULL SUPPORT	Standard HID devices. All USB keyboards and mice work immediately without configuration. Supports multiple input devices simultaneously.
Touch Screens	✓ OPTIONAL SUPPORT	Windows touch interface compatible. Works with all Windows-certified touch screen monitors. Full touch gesture support for navigation and input.

"Business Hardware Compatibility: Professional matrix detailing peripheral integration - from plug-and-play barcode scanners to printer compatibility - ensuring smooth deployment with existing business infrastructure."

✔ Transparent Compatibility | ✔ Industry Standard Hardware | ✔ Informed Deployment

📄 PAGE 3: ENTERPRISE MONITORING & SUPPORT

- ◆ Real-Time System Health Monitoring
 - ✔ Live Sync Dashboard: Real-time operation tracking
 - ✔ Performance Analytics: Business intelligence insights
 - ✔ Error Monitoring: Proactive issue detection
 - ✔ Health Alerts: Configurable business notifications



"Enterprise Operations Monitoring: Real-time dashboard provides complete visibility into system health, sync status, and business performance metrics - ensuring operational excellence and proactive management."

✅ Live Performance Tracking | ✅ Proactive Health Monitoring | ✅ Business Intelligence

♦ **Comprehensive Enterprise Support**

INCLUDED TRANSITION SUPPORT:

- 30-Day Full Support: Complete handover assistance
- Technical Documentation: Architecture & API guides
- Deployment Assistance: Installation & configuration
- Team Training: Cashier & administrator training

ENTERPRISE SUCCESS FRAMEWORK:

- Dedicated Onboarding: Business-specific deployment planning
- Technical Resources: Complete source code access
- Best Practices: Industry-proven implementation patterns
- Continuous Updates: Regular feature & security enhancements

✅ Business Partnership Approach | ✅ Complete Technical Access

✅ Professional Implementation | ✅ Ongoing Value Delivery

 **System Requirements - Enterprise-Ready POS Solution**